

# C.S. McKee Core Fixed Income Trust

InterScore™

31

As of Date : September 30, 2009  
 Asset Class : ISV Intermediate Fixed Income  
 Optimal Index : BC Aggregate Bond  
 Benchmark R<sup>2</sup> : 74.15  
 PeerGroup R<sup>2</sup> : 70.52



## DESCRIPTION AND COMMENTARY:

C.S. McKee Core Fixed Income Trust is best compared with ISV Intermediate Fixed Income and the BC Aggregate Bond. A comparison with both is shown below. All of the "MPT Statistics" are for the 3-year period ending September 30, 2009. In the 3-year period the fund outperformed its index by 0.84 and outperformed its peers by 3. In the 3-year period C.S. McKee Core Fixed Income Trust has a peer return rank of 8. In the same time period the C.S. McKee Core Fixed Income Trust added value through its active management as evidenced by a positive Alpha of 1.56. A score of "zero" and above is deemed "acceptable" though not necessarily indicative of being "best in class". InterScore is a proprietary scoring methodology developed by InterServ LLC solely for the use of its clients.

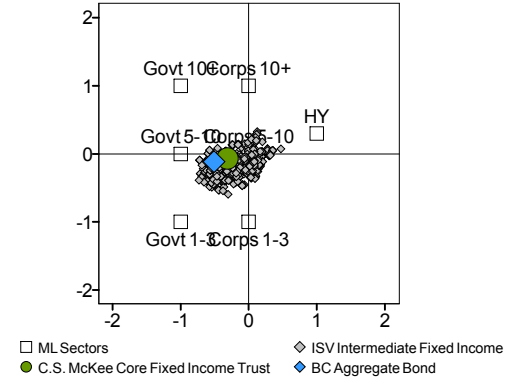
### InterServ LLC Investment Performance Summary

Calendar	2004	2005	2006	2007	2008
Fund	4.32	3.15	4.66	7.18	4.64
Index	4.34	2.43	4.33	6.97	5.24
Index Excess	-0.02	0.72	0.33	0.21	-0.60
Peer Group	3.92	1.99	3.98	5.25	-2.74
Peer Group Excess	0.40	1.16	0.68	1.93	7.38

Annualized	YTD	1 Yr	3 Yr	5 Yr	10 Yr
Fund	8.52	11.23	7.25	5.78	6.55
Index	5.72	10.56	6.41	5.13	6.30
Index Excess	2.80	0.67	0.84	0.65	0.25
Peer Group	10.81	10.16	4.25	3.71	5.23
Peer Group Excess	-2.29	1.07	3.00	2.07	1.32

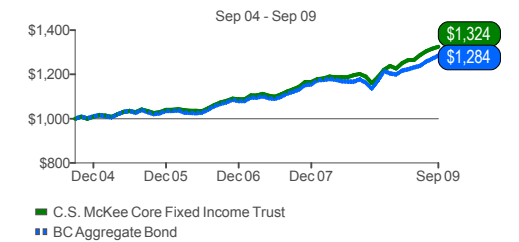
### 3-Year Average Style Exposure



### MPT Statistics

3-year:	Alpha	Beta	Up Mkt Capture	Down Mkt Capture	Sharpe	Treynor	Standard Deviation	Downside Risk	Peer Return Rank
Fund	1.56	0.78	94.05	50.58	1.20	0.06	3.56	1.73	8
Index	N/A	N/A	N/A	N/A	0.88	0.04	4.03	1.82	18

### Growth of \$1,000



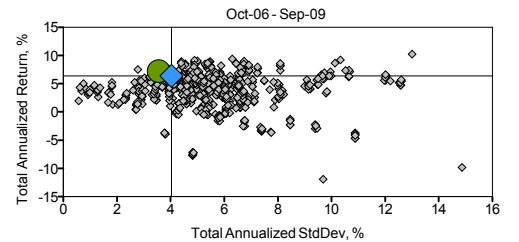
### Fund Facts

Ticker	CAMKSC
Net Assets	1891.3 Mil
No. of Holdings	71.00
Turnover Ratio	180%
Closed to Investors	No
Manager Tenure	14.0 years
Expense Ratio (Net)	0.40
Expense Ratio (Gross)	0.4

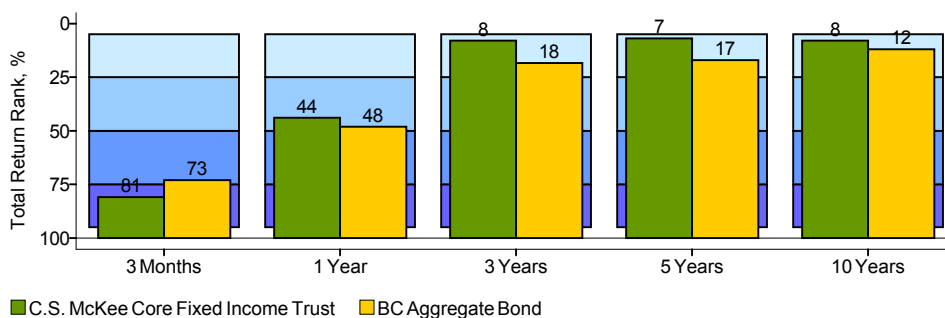
### Top 10 Holdings

Name	% of Portfolio	Mkt. Value

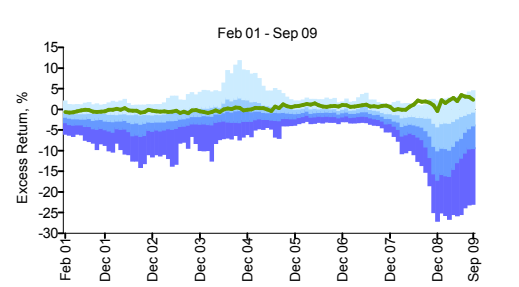
### Risk Return Comparison



### Peer Group Rank



### 24M Rolling Excess Performance



**NOT FDIC INSURED      MAY LOSE VALUE      NO BANK GUARANTEE      NOT INSURED BY ANY GOVERNMENT AGENCY**

©2009, InterServ®, LLC. All rights reserved. InterServ, LLC is a Registered Investment Advisor and, as such, does not offer to sell or solicit the offer to buy any securities. The information contained herein does not constitute an offer to sell or the solicitation of an offer to buy any security. All processes and analysis are the proprietary intellectual property of InterServ, LLC. Use with the general public may be contrary to federal or local law and all investment professionals must satisfy themselves that their use of the information contained herein complies with federal and local securities laws as well as the compliance programs of any firms with which they may be associated. The data contained within this InterServ, LLC report is for information purposes only. No implementation action will be taken until final investment recommendations are approved in writing by the plan sponsor or named plan fiduciary. Any and all investment performance information provided herein is based upon statistical analysis of historical performance and fund behavior; past performance is no guarantee of future results. InterServ is a wholly-owned subsidiary of DailyAccess Corporation. InterServ and InterServ, LLC are trademarks of DailyAccess Corporation.